

Metal Chair Series



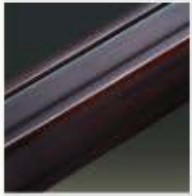
1. 拉手 Handle
椅背上方具有开孔设计，方便搬动提拉。
The handling hole design is convenient for carrying.



2. 焊接 Welding
精致的焊接工艺并进行打磨抛光处理，焊接面光滑平整。
Welding adopts meticulous full-length welding technique and is burnished and polished, and the welding surface is smooth and flat.



3. 布料 Fabric
百余款布料供客户选择，并可进行额外的防污及阻燃处理。
Hundreds of kinds of Fabric are provided for clients to select and can accept additional pollution prevention and flame retardant processing.



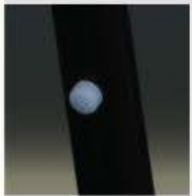
4. 表面处理
Surface processing
采用先进工艺进行喷漆或粉末喷涂处理，有多种饰面颜色。
Surface processing adopts advanced technique for spraying paint or powder coating processing with a plurality of veneer colors.



5. 坐垫 Cushion
采用高密度一次倒模成型海绵，可加阻燃处理。
Cushion adopts high density sponge which is shaped through primary reverse moulding, and flame retardant processing can be added.



6. 椅架管材 Frame
有多种铝合金、钢材、不锈钢材料供选择。
A variety of aluminum, steel, stainless steel materials are provided for selection.



7. 叠放保护粒
Moderate plastic pellets
采用软硬度适中的塑胶颗粒，防止椅子在堆叠时相互撞击划伤饰面。
Moderate plastic pellets are adopted for preventing the chair from hitting and scratching veneers in stacking.



8. 椅脚 Foot
采用高硬度透明塑胶椅脚，双角度自动调节平衡设计。
Foot is adopted high strength clear plastic cement, the bottom have two angle to balance adjustment.

The Selection Of Frame Tube

铝合金管材选择 Aluminium Tube



HV 凸心管



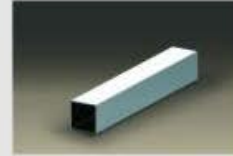
HE 凹心管



HU 波纹管



HF 平心管



HT 方管

不锈钢管材选择 Stainless Steel Tube



方管 Square Tube



圆管 Round Tube

钢管材选择 Steel Tube



方管 Square Tube



圆管 Round Tube

烤漆色泽选择 The Colors Of Painting



BP001 浅幼黄金



BP002 透明红



BP003 娇绿闪光



BP004 橙红闪光



BP 005 粗红金



BP006 闪光银



BP007 褐色



BP 021 红古铜



BP022 青古铜

粉末静电喷涂色泽选择

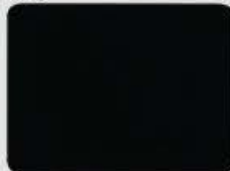
The Colors Of Powder Coating



X-MT8033-A5



X-GY8219-T0



P-BK2772-S5

Aluminium Banquet Chairs



Aluminium Banquet Chairs



型号 MODEL NO.	CA-1050
规格 SIZE	47(W) x 60(D) x 93.5cm (H)
叠加数量 STACKING	10 Pcs
管材 FRAME	铝合金HE管 HE Aluminium Tube
饰面 FINISH	BP 001 浅幼黄金烤漆
布料 FABRIC	VS039-4

* 此款宴会椅可以加选摇背功能设计。
Flex-back function design can be added and selected on this banquet chair.



Aluminium Banquet Chairs



型号 MODEL NO.	CA-1090
规格 SIZE	47(W)× 57(D)× 92cm(H)
叠加数量 STACKING	10 Pcs
管材 FRAME	铝合金HE管, HE Aluminium Tube
饰面 FINISH	BP 001 浅幼黄金烤漆
布料 FABRIC	C06-9

*此款宴会椅可以加选靠背功能设计。
Flex-back function design can be added and selected on
this banquet chair.

Aluminium Banquet Chairs



型号 MODEL NO. CA-1110
规格 SIZE 48.5(W) × 65(D) × 90.5cm (H)
叠加数量 STACKING 10 Pcs
管材 FRAME 铝合金HT管, HT Aluminium Tube
饰面 FINISH BP001 浅幼黄金烤漆
布料 FABRIC VS039-4

*此款宴会椅靠背及坐垫均为人体工学弧线设计。
Backrest and cushion of the banquet chair are designed according to ergonomic curves.

型号 MODEL NO. CA-1120
规格 SIZE 48.5(W) × 65(D) × 91cm (H)
叠加数量 STACKING 10 Pcs
管材 FRAME 铝合金HT管, HT Aluminium Tube
饰面 FINISH BP001 浅幼黄金烤漆
布料 FABRIC VS039-4

*此款宴会椅靠背及坐垫均为人体工学弧线设计。
Backrest and cushion of the banquet chair are designed according to ergonomic curves.

Aluminium Banquet Chairs



型号 MODEL NO. CA-1071
规格 SIZE 62.5(W) × 60.5(D) × 94.5cm (H)
叠加数量 STACKING 10 Pcs
管材 FRAME 铝合金H V管, H V Aluminium Tube
饰面 FINISH BP002 透明红烤漆
布料 FABRIC C06-1



型号 MODEL NO. CA-1070
规格 SIZE 47(W) × 60.5(D) × 94.5cm (H)
叠加数量 STACKING 10 Pcs
管材 FRAME 铝合金H V管, H V Aluminium Tube
饰面 FINISH BP002 透明红烤漆
布料 FABRIC C06-1

*此款宴会椅可以加选程背功能设计。
Flex-back function design can be added and selected
on this banquet chair.

Aluminium Banquet Chairs



型号 MODEL NO. CA-1100
规格 SIZE 47 (W) × 59 (D) × 92cm (H)
叠加数量 STACKING 10 Pcs
管材 FRAME 铝合金HF管, HF Aluminium Tube
饰面 FINISH BP001 浅幼黄金烤漆
布料 FABRIC DA0901-2B

*此款宴会椅可以加选摇背功能设计。
Flex-back function design can be added and selected on
this banquet chair.



型号 MODEL NO. CA-9060
规格 SIZE 46 (W) × 58.5 (D) × 95cm (H)
叠加数量 STACKING 10 Pcs
管材 FRAME 铝合金HT管, HT Aluminium Tube
饰面 FINISH BP001 浅幼黄金烤漆
布料 FABRIC AA105-3B

*此款宴会椅可以加选摇背功能设计。
Flex-back function design can be added and selected on
this banquet chair.

Aluminium Banquet Chairs



型号 MODEL NO. CA-1020
规格 SIZE 47(W)× 59(D)× 93.5cm(H)
叠加数量 STACKING 10 Pcs
管材 FRAME 铝合金HF管, HF Aluminium Tube
饰面 FINISH BP001 浅幼黄金烤漆
布料 FABRIC 8074

*此款宴会椅可以加选程背功能设计。

Flex-back function design can be added and selected on this banquet chair.



Aluminium Banquet Chairs



型号 MODEL NO. CA-9040
规格 SIZE 47(W)× 60.5(D)× 92.5cm(H)
叠加数量 STACKING 10 Pcs
管材 FRAME 铝合金HT管, HT Aluminium Tube
饰面 FINISH BP001 浅幼黄金烤漆
布料 FABRIC VS015-9

*此款宴会椅可以加选靠背功能设计。
Flex-back function design can be added and
selected on this banquet chair.

*此款宴会椅靠背及坐垫均为人体工学弧线设计。
Backrest and cushion of the banquet chair are
designed according to ergonomic curves.

Aluminium Banquet Chairs



型号 MODEL NO. CA-9020
规格 SIZE 46(W) × 59(D) × 95cm(H)
叠加数量 STACKING 10 Pcs
管材 FRAME 铝合金HV管 HV Aluminium Tube
饰面 FINISH BP 006 闪光银烤漆
布料 FABRIC BH006.4B-12

*此款宴会椅可以加选摇背功能设计。
Flex-back function design can be added and selected on this banquet chair.

*此款宴会椅靠背及坐垫均为人体工学弧线设计。
Back-rest and cushion of the banquet chair are designed according to ergonomic curves.



型号 MODEL NO. CA-9023



背靠可增设文件资料袋 (CA-9023)
本资料中所有宴会椅均可额外增加此功能

A document bag can be additionally arranged on the backrest and the function can be additionally added in all banquet chairs in this catalogue.

Aluminium Banquet Chairs



型号 MODEL NO. CA-1040
规格 SIZE 47(W) × 59(D) × 92.5cm (H)
叠加数量 STACKING 10 Pcs
管材 FRAME 铝合金HU管, HU Aluminium Tube
饰面 FINISH BP005 粗红金烤漆
布料 FABRIC VS047-3

*此款宴会椅可以加选摇背功能设计。
Flex-back function design can be added and selected on this banquet chair.



型号 MODEL NO. CA-9030
规格 SIZE 47(W) × 58.5(D) × 98cm (H)
叠加数量 STACKING 10 Pcs
管材 FRAME 铝合金HU管, HU Aluminium Tube
饰面 FINISH BP005 粗红金烤漆
布料 FABRIC H20-D0435

*此款宴会椅可以加选摇背功能设计。
Flex-back function design can be added and selected on this banquet chair.

Flax Back Aluminium Banquet Chairs



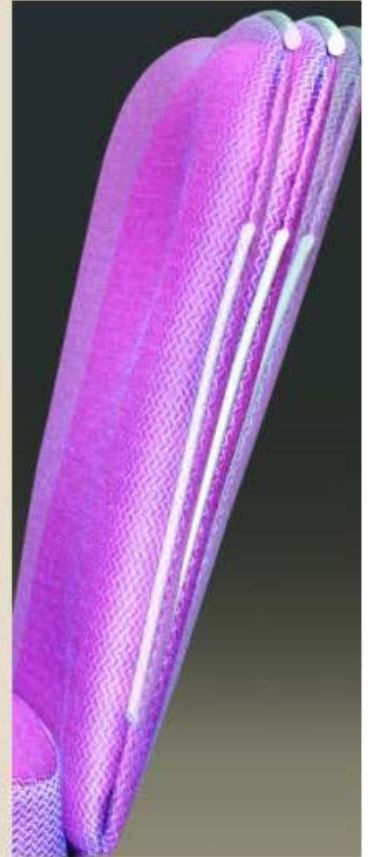
型号 MODEL NO. CA-4011
规格 SIZE 62.5(W)× 61.5(D)× 92cm (H)
叠加数量 STACKING 5 Pcs
管材 FRAME 铝合金HF管, HF Aluminium Tube
饰面 FINISH Bp001 浅幼黄金烤漆
布料 FABRIC VSD12-16

型号 MODEL NO. CA-4010
规格 SIZE 42.5(W)× 61.5(D)× 92cm(H)
叠加数量 STACKING 5 Pcs
管材 FRAME 铝合金HF管, HF Aluminium Tube
饰面 FINISH BP001 浅幼黄金烤漆
布料 FABRIC VSD12-16

*此系列 (CA-4系列) 靠背与基座之间采用高质量锰钢板连接, 具有高弹力的摇背功能; 同时靠背与坐垫进行了特殊的人体工学曲线设计, 可有效减少长时间坐姿疲劳。

High-quality manganese steel plates are adopted between the backrest and the base of this series (CA-F series), the chairs have roll back function with high elasticity; simultaneously the backrest and the cushion are designed according to special ergonomic curve, which can effectively reduce fatigue due to sitting for long time.

Flax Back Aluminium Banquet Chairs



型号 MODEL NO. CA-4020
 规格 SIZE 44(W)X57(D)X92cm(H)
 叠加数量 STACKING 5 Pcs
 管材 FRAME 铝合金HF管, HF Aluminium Tube
 饰面 FINISH BP006 闪光银烤漆
 布料 FABRIC VS012-15

型号 MODEL NO. CA-4030
 规格 SIZE 43(W)X60.5(D)X91.8cm(H)
 叠加数量 STACKING 5 Pcs
 管材 FRAME 铝合金HF管, HF Aluminium Tube
 饰面 FINISH BP002 透明红烤漆
 布料 FABRIC VS012-15

此系列(CA-F系列)靠背与基座之间采用高质量锰钢板连接,具有高弹力的摇背功能;同时靠背与坐垫进行了特殊的人体工学曲线设计,可有效减少长时间坐姿疲劳。

High-quality manganese steel plates are adopted between the backrest and the base of this series (CA-F series), the chairs have roll back function with high elasticity; simultaneously the backrest and the cushion are designed according to special ergonomic curve, which can effectively reduce fatigue due to sitting for long time.

Flax Back Aluminium Banquet Chairs



舒适的摇背设计
The comfortable flex-back designed



高弹性、高强度锰钢板连接件
High-quality manganese steel plates are adopted between the backrest and the base

型号 MODEL NO. CA-4050
规格 SIZE 46(W) × 53.5(D) × 94cm(H)
叠加数量 STACKING 5 Pcs
管材 FRAME 铝合金HT管, HT Aluminium Tube
饰面 FINISH BP006 闪光银烤漆
布料 FABRIC VC04-5

*此系列(CA-4系列)靠背与基座之间采用高质量锰钢板连接,具有高弹力的摇背功能;同时靠背与坐垫进行了特殊的人体工学曲线设计,可有效减少长时间坐姿疲劳。

High-quality manganese steel plates are adopted between the backrest and the base of this series (CA-F series), the chairs have roll back function with high elasticity; simultaneously the backrest and the cushion are designed according to special ergonomic curve, which can effectively reduce fatigue due to sitting for long time.

Flax Back Aluminium Banquet Chairs



型号 MODEL NO. CA-4060
规格 SIZE 45.5(W) × 53.5(D) × 93cm(H)
叠加数量 STACKING 5 Pcs
管材 FRAME 铝合金HE管, HE Aluminium Tube
饰面 FINISH BP 011 香槟银烤漆
布料 FABRIC VC04-6

*此系列(CA-4系列)靠背与底座之间采用高质量锰钢板连接,具有高弹力的摇背功能;同时靠背与坐垫进行了特殊的人体工学曲线设计,可有效减少长时间坐姿疲劳。

High-quality manganese steel plates are adopted between the backrest and the base of this series (CA-F series), the chairs have roll back function with high elasticity; simultaneously the backrest and the cushion are designed according to special ergonomic curve, which can effectively reduce fatigue due to sitting for long time.

Trolley For Banquet Chairs



EQ-CT01 58(W)×117(D)×120cm(H)



EQ-CT02 56(W)×65(D)×112cm(H)



*EQ-CT01增设了前后辅助支撑轮，使用及运输椅子更为方便轻松。

EQ-CT01 is additionally provided with a front auxiliary support wheel and a rear auxiliary support wheel, and the use and transportation of the chair are more convenient and easier.

Stainless Steel Chairs & Steel Chairs



Wiredrawing Stainless Steel Banquet Chairs



靠背特别的腰位凸出设计，就座更加舒适。

The back-rest are designed according to special ergonomic curve it is very comfortable on seating.



精细的拉丝工艺，带来非同一般的不锈钢质感。

The fine wiredrawing give you the splendid feeling of stainless steel.

型号 MODEL NO.	CS-9320
规格 SIZE	48(W)×61(D)×100cm(H)
叠加数量 STACKING	5 Pcs
管材 FRAME	不锈钢管, Stainless Steel Tube
饰面 FINISH	拉丝处理, Wiredrawing
布料 FABRIC	FY291-4

Wiredrawing Stainless Steel Banquet Chairs



精细的拉丝工艺，带来非同一般的不锈钢质感。

The fine wiredrawing give you the splendid feeling of stainless steel.

型号 MODEL NO. CS-9310
规格 SIZE 47(W) × 58(D) × 88cm (H)
叠加数量 STACKING 10 Pcs
管材 FRAME 不锈钢管, Stainless Steel Tube
饰面 FINISH 拉丝处理, Wiredrawing
布料 FABRIC DA0908-13

*此款宴会椅靠背及坐垫均为人体工学弧线设计。
Back-rest and cushion of the banquet chair are designed according to ergonomic curves.

Wiredrawing Stainless Steel Banquet Chairs



型号 MODEL NO. CS-9330
规格 SIZE 46.5(W) × 56.5(D) × 97cm (H)
叠加数量 STACKING 5 Pcs
管材 FRAME 不锈钢管, Stainless Steel Tube
饰面 FINISH 拉丝处理, Wiredrawing
布料 FABRIC VS039-5

*此款宴会椅靠背及坐垫均为人体工学弧线设计。
Back-rest and cushion of the banquet chair are designed according to ergonomic curves.



型号 MODEL NO. CS-9340
规格 SIZE 68.5(W) × 64.5(D) × 97cm (H)
叠加数量 STACKING 5 Pcs
管材 FRAME 不锈钢管, Stainless Steel Tube
饰面 FINISH 拉丝处理, Wiredrawing
布料 FABRIC VS015-9

*此款宴会椅靠背及坐垫均为人体工学弧线设计。
Back-rest and cushion of the banquet chair are designed according to ergonomic curves.

Wiredrawing Stainless Steel Banquet Chairs



型号 MODEL NO.	CS-9350
规格 SIZE	47(W) × 60(D) × 89cm(H)
叠加数量 STACKING	5 Pcs
管材 FRAME	不锈钢管, Stainless Steel Tube
饰面 FINISH	拉丝处理, Wiredrawing
布料 FABRIC	FY292-5

*此款宴会椅靠背及坐垫均为人体工学弧线设计。
Back-rest and cushion of the banquet chair are designed according to ergonomic curves.

Steel Banquet Chairs



型号 MODEL NO. CT-9320
规格 SIZE 48(W) × 61(D) × 100cm (H)
叠加数量 STACKING 5 Pcs
管材 FRAME 钢管, Steel Tube
饰面 FINISH BP006 闪光银烤漆
布料 FABRIC VS039-5

*此款宴会椅靠背及坐垫均为人体工学弧线设计。
Back-rest and cushion of the banquet chair are designed according to ergonomic curves.



型号 MODEL NO. CT-9350
规格 SIZE 47(W) × 60(D) × 89cm (H)
叠加数量 STACKING 5 Pcs
管材 FRAME 钢管, Steel Tube
饰面 FINISH BP021 红古铜烤漆
布料 FABRIC RFD016-9

*此款宴会椅靠背及坐垫均为人体工学弧线设计。
Back-rest and cushion of the banquet chair are designed according to ergonomic curves.

Steel Banquet Chairs



型号 MODEL NO. CT-9330
 规格 SIZE 46.5(W)× 56.5(D)× 97cm(H)
 叠加数量 STACKING 5 Pcs
 管材 FRAME 圆钢管, Round Steel Tube
 饰面 FINISH BP006 闪光银烤漆
 布料 FABRIC R8DA17

型号 MODEL NO. CT-9330
 规格 SIZE 46.5(W)× 56.5(D)× 97cm(H)
 叠加数量 STACKING 5 Pcs
 管材 FRAME 圆钢管, Round Steel Tube
 饰面 FINISH BP015 黑色烤漆
 布料 FABRIC 8A46-2



*此款宴会椅可以加选靠背功能设计。
 Flex-back function design can be added and selected on this banquet chair.



*此款宴会椅靠背及坐垫均为人体工学弧线设计。
 Back-rest and cushion of the banquet chair are designed according to ergonomic curves.

Steel Banquet Chairs



型号 MODEL NO. CT-5323
规格 SIZE 46 (W) x 56.5(D) x 90cm (H)
叠加数量 STACKING 5 Pcs
管材 FRAME 钢材, Steel Tube
饰面 FINISH Bp001 浅幼黄金烤漆
布料 FABRIC C06-7



型号 MODEL NO. CT-5320
规格 SIZE 46(W) x 56.5(D) x 90cm (H)
叠加数量 STACKING 5 Pcs
管材 FRAME 钢材, Steel Tube
饰面 FINISH BP001 浅幼黄金烤漆
布料 FABRIC C06-7



Steel Banquet Chairs



型号 MODEL NO. CT-1010
规格 SIZE 45.5(W) × 61(D) × 93cm (H)
叠加数量 STACKING 10 Pcs
管材 FRAME 钢材, Steel Tube
饰面 FINISH BP001 浅幼黄金烤漆
布料 FABRIC 8112



Steel Banquet Chairs



型号 MODEL NO. CT-1220
规格 SIZE 45.5(W) × 61(D) × 86cm(H)
叠加数量 STACKING 10 Pcs
管材 FRAME 钢材, Steel Tube
饰面 FINISH BP001 浅幼黄金烤漆
布料 FABRIC 8112



型号 MODEL NO. CT-1221
规格 SIZE 57(W) × 61(D) × 86cm(H)
叠加数量 STACKING 10 Pcs
管材 FRAME 钢材, Steel Tube
饰面 FINISH BP001 浅幼黄金烤漆
布料 FABRIC 8112



型号 MODEL NO. CT-1230
规格 SIZE 45.5(W) × 61(D) × 93cm(H)
叠加数量 STACKING 10 Pcs
管材 FRAME 钢材, Steel Tube
饰面 FINISH BP001 浅幼黄金烤漆
布料 FABRIC 8112

Banquet Tables

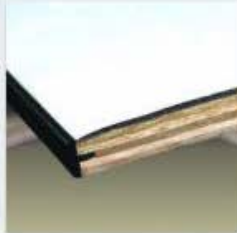


Banquet Tables

多功能宴会组合折台 Multiple Use Folding Banquet Table

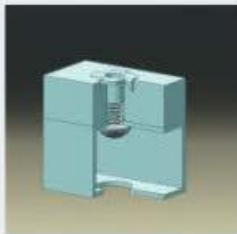
1 台面有多种材料选择：附带隔音海绵的胶皮面、仿皮面，及防火板面。

Table has a variety of materials for selection and is attached with vinyl surfaces, leather-like surfaces of sound insulation sponge and plastic laminate surfaces.



3 台面与台架采取螺丝+螺母结构固定，异常稳固，永不脱离。

Table and bench are fixed through adopting a screw + nut structure, are particularly stable, and can not separate forever.



5 折叠构件1.5mm厚高强度热处理弹簧钢片结构，比弹簧结构更加耐用。

Folding component is a high-strength heat treatment spring steel plate structure with the thickness of 1.5mm and is more durable than a spring structure.

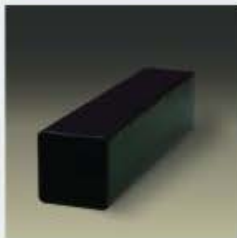
专利号: ZL 200820050653.0

Patent Right NO.: ZL200820050653.0



7 台架为优质高频钢管，表面进行粉末静电喷涂处理，历久如新。

Bench is a high-quality high-frequency steel pipe, the surface accepts powder coating processing, and is new even after being used for long time.



9 子母台锁，可在台架收起后进行锁定，防止台腿在搬运时松脱。

Primary and secondary table lock can be locked after the leg is folded for preventing legs of the table from sliding downwards when in moving.



Banquet Tables

我们可能是最稳固、折叠后占用空间最少的宴会折台
We May Be The Most Solid And Saving Space Banquet Table



2 主体采用18mm优质多层合资环保夹板。

The main body adopts 18mm high-quality multi-layer joint venture environment-friendly plywood.



4 台板封边采用黑色带倒钩楔入式胶边,不易松脱,耐磨损。

Edges of tables adopt black embedded type rubber edges with barbs, and are not easy to loose and wear-resistant.



6 高强度防撞塑胶垫,可有效防止折起的台之间在相互搭叠时的损伤。

High-intensity anti-collision plastic block, capable of effectively preventing the folded tables from damages in mutual overlapping.



8 倒钩弹片式可调节脚,不易脱落、滑牙。

Barb shrapnel-type adjustable feet are not easy to fall off and sliding.

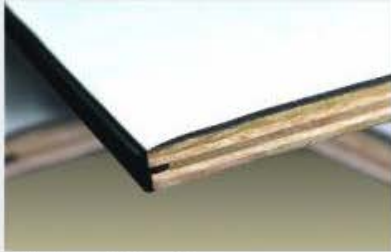


10 台架收起后仅6CM厚,是其他同类产品厚度的1/2,节约了1倍的储存空间。

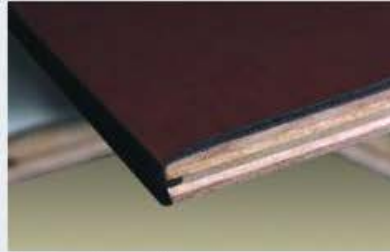
The table is only as thick as 6cm after folding and is only a half of the thickness of other similar products, and one time storage space can be saved.

Banquet Tables

台面材料选择 The Surface Of Table Top



白色胶皮附隔音海绵
vinyl surfaces with sound
insulation sponge



仿皮附隔音海绵
Leather-like Surface
with sound insulation sponge

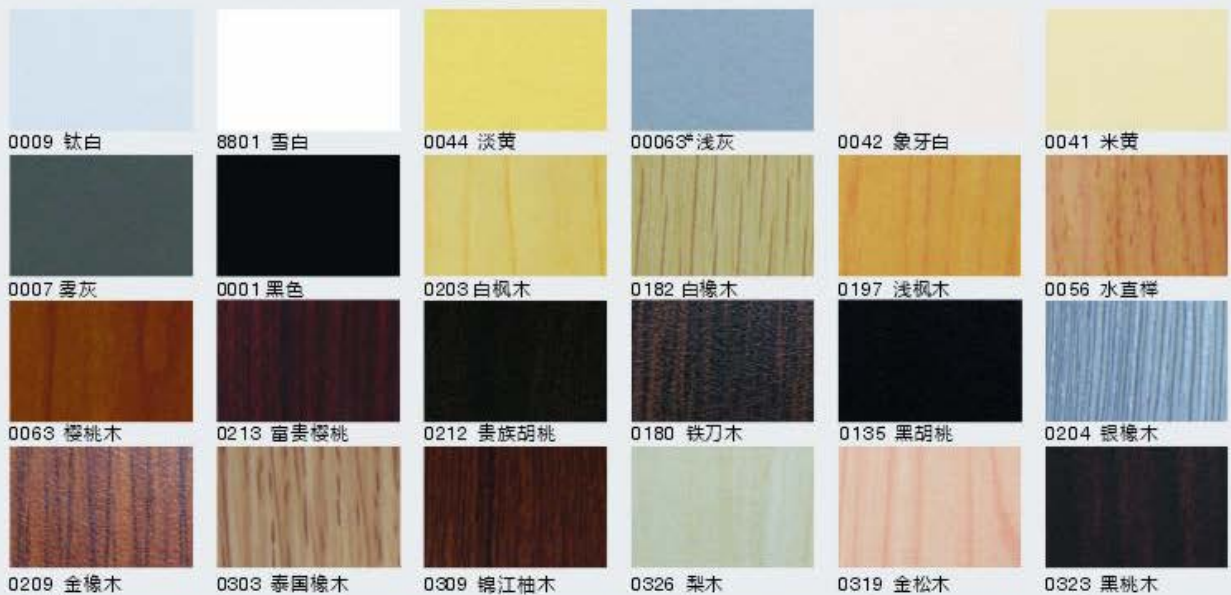


防火板面
plastic laminate surfaces

仿皮色泽选择 The Colors of Leather-like Surface

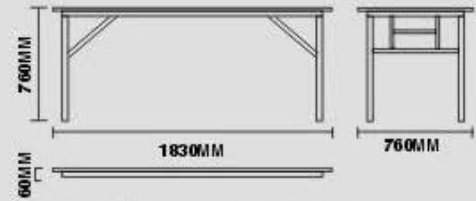
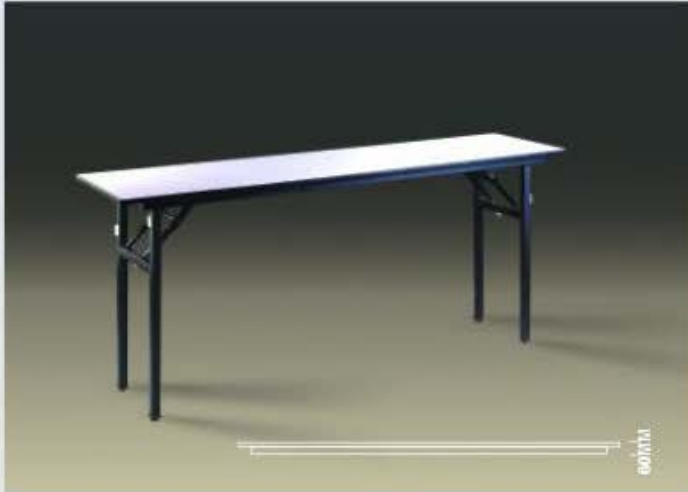


防火板选择 The Colors of Plastic Laminate Surfaces



Banquet Tables

多功能系列组合摺台
Multiple Use Series Folding Table



长方形		RECTANGLES	
型号	面积		
MODEL	DIAMENSION		
	英寸 IN.	公分 CM.	
BT-001A	18 × 48	45.5 × 122	
BT-002A	18 × 60	45.5 × 152	
BT-003A	18 × 72	45.5 × 183	
BT-004A	18 × 96	45.5 × 244	

长方形		RECTANGLES	
型号	面积		
MODEL	DIAMENSION		
	英寸 IN.	公分 CM.	
BT-005A	30 × 48	76 × 122	
BT-006A	30 × 60	76 × 152	
BT-007A	30 × 72	76 × 183	
BT-008A	30 × 96	76 × 244	
BT-009A	36 × 48	91.5 × 122	
BT-010A	36 × 60	91.5 × 152	
BT-011A	36 × 72	91.5 × 183	
BT-012A	36 × 96	91.5 × 244	

方形		SQUARES	
型号	面积		
MODEL	DIAMENSION		
	英寸 IN.	公分 CM.	
BT-013B	30 × 30	76 × 76	
BT-014B	36 × 36	91.5 × 91.5	

我们可能是最薄，最稳固的宴会摺台易储存及节省空间场地
 We may the thinnest and solid banquet table easy for storage and save space



圓形	ROUNDS	
型号 MODEL	直径 DIAMETER	
	英寸 IN.	公分 CM.
BT-015D	直径 DIA.30	76
BT-016D	直径 DIA.36	91.5
BT-017D	直径 DIA.42	107
BT-018D	直径 DIA.48	122
BT-019D	直径 DIA.54	137
BT-020D	直径 DIA.60	152
BT-021D	直径 DIA.66	168
BT-022D	直径 DIA.72	183



半圓形及半島形
 HALF-ROUNDS & PENNSULAS

型号 MODEL	直径(A) DIAMETER(A)		半径(B) RADIUS(B)	
	英寸IN.	公分CM.	英寸IN.	公分CM.
BT-023E*	30	76	40	102
BT-024E*	36	91.5	44	112
BT-025E	48	122	24	61
BT-026E*	60	152	34	86
BT-027E	72	183	36	91.5
BT-028E	84	214	72	107
BT-029E	90	229	45	114
BT-030E	96	244	48	122



1/4圓形 QUARTER-ROUND

型号 MODEL	半径(A) RADIUS(A)		半径(B) RADIUS(B)	
	英寸IN.	公分CM.	英寸IN.	公分CM.
BT-031F	30	76	30	76
BT-032F	36	91.5	36	91.5
BT-132F	54	137	54	137

台高 除特别指定台之高度外,一概以30英寸(76CM)为标准高度
TABLE HEIGHT UNLESS SPECIFIED ON ORDER, TABLES WILL BE SHIPPED 30" (76CM) HIGH.

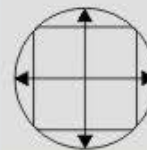


方台至圆台
SQUARE TO ROUND TABLE



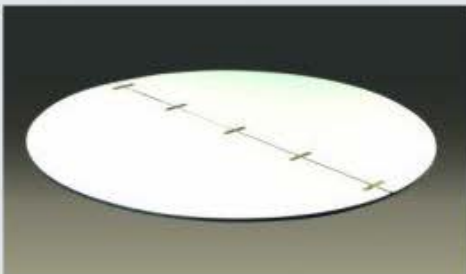
娥眉月形 CRESCENTS

型号 MODEL	外径(A) CIRCLE'S OUTSIDE RADIUS(A)		台宽(B) TABLE WIDTH(B)		内径(C) CIRCLE'S INSIDE RADIUS(C)		件数组合 NO. TO A CIRCLE	座位数 SEATING CAPACITY
	英寸IN.	公分CM.	英寸IN.	公分CM.	英寸IN.	公分CM.		
BT-035G	60	152	30	76	30	76	4	18-19
BT-036G	60	152	36	91.5	24	60.5	4	18-19
BT-037G	72	183	30	76	42	107	6	21-23
BT-038G	72	183	36	91.5	36	91.5	6	21-23
BT-039G	90	228	30	76	60	152	6	27-28
BT-040G	90	228	36	91.5	54	137.5	6	27-28
BT-041G	96	244	30	76	66	168	6	28-30
BT-042G	96	244	36	91.5	60	152.5	6	28-30
BT-043G	108	274	30	76	78	198	8	32-34
BT-044G	108	274.5	36	91.5	72	183	8	32-34



BT-201T
 方台76cm至圆台105cm
 30" SQUARE TO 41" ROUND
 BT-202T
 方台91.5cm至圆台127.5cm
 36" SQUARE TO 51" ROUND

移动式对折台面板
FOLDAWAY ROUND TABLE EXTENSION TOP



型号 MODEL	规格 SIZE
BT-124T	Dia. 88" ≈244cm
BT-126T	Dia. 96" ≈244cm

可拆式米字台架
FOLDAWAY TABLE STAND



BT-022S 适于直径183cm台面 (For Dia. 183cm Round Table)
 BT-123S至BT-126S 分别适于直径198-244cm台面
 (For Dia. 198-244cm Round Table)

圆台运输车 Round Table Trolley



RS-R T001
90(W)X186(D)X116cm(H)
设防撞围边, 独特的可收起坡板设计, 便于圆台的滚动放置。可容纳圆台15张
Anti-collision borders are arranged, and unique foldable slope plate design is convenient for rolling and placing round tables. Capable of containing 15 pieces

长方台运输车 Flat Table Trolley



RS-R T002
90(W)X186(D)X116cm(H)
设防撞围边, 可拆装式拉手, 方便不同方向的推拉。
Anti-collision borders are arranged, and removable handles are convenient for pushing and pulling to different direction.

Banquet Tables

如蕾尔折叠式台铰 Renel Foldable Table Mechanism System



Renel foldable table mechanism system and firm rack are the two outstanding structure characters of renel banquet table. Foldable table mechanism system: safety, flexibility, long lasting endurance, slim the depth when folding.



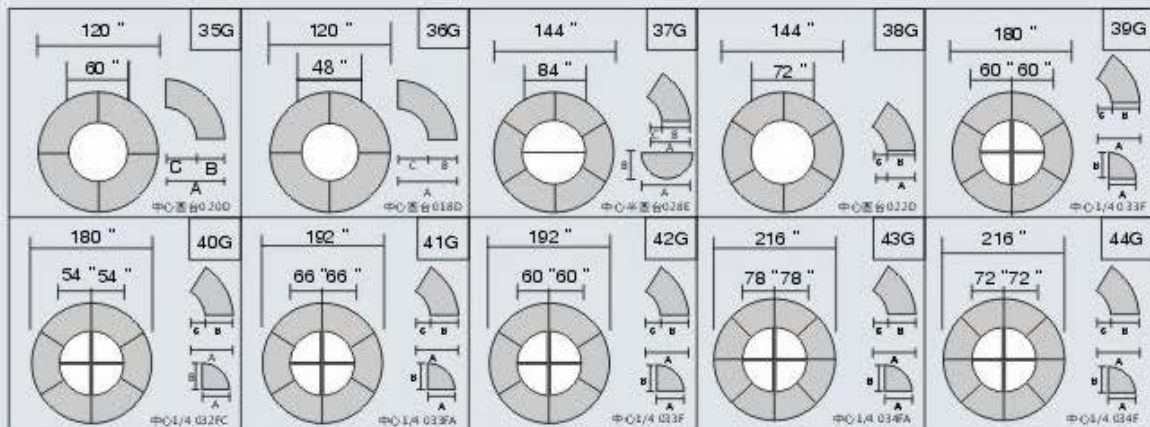
如蕾尔折叠式台铰和加固台架, 是如蕾尔与众不同的结构特点. 折叠台铰: 安全、灵活、耐用、减少折叠厚度.



本公司弹簧片式折叠台铰已获得国家实用新型专利, 专利号: ZL 200820050653.0
Our foldable table mechanism system has the utility model patent, the patent No.: ZL 200820050653.0

以下是蛾眉月形台中心件数组合至大圆台
Below Are Crescents Table' s Centre No.to A Circle

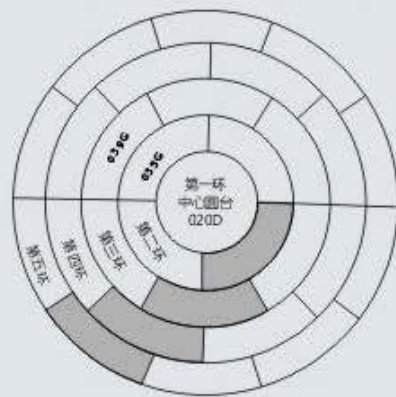
蛾眉月形 035G	4张组合	B台面宽30"	中心可选用 020D	圆形	直径 60"	1张	直径共 120"
蛾眉月形 036G	4张组合	B台面宽36"	中心可选用 018D	圆形	直径 48"	1张	直径共 120"
蛾眉月形 037G	6张组合	B台面宽30"	中心可选用 028E	半圆	A84" B42"	2张	直径共 144"
蛾眉月形 038G	6张组合	B台面宽36"	中心可选用 022D	圆形	直径 72"	1张	直径共 144"
蛾眉月形 039G	6张组合	B台面宽30"	中心可选用 033F	1/4圆形	A60" B60"	4张	直径共 180"
蛾眉月形 040G	6张组合	B台面宽36"	中心可选用 132F	1/4圆形	A54" B54"	4张	直径共 180"
蛾眉月形 041G	6张组合	B台面宽30"	中心可选用 133F	1/4圆形	A66" B66"	4张	直径共 192"
蛾眉月形 042G	6张组合	B台面宽36"	中心可选用 033F	1/4圆形	A60" B60"	4张	直径共 192"
蛾眉月形 043G	8张组合	B台面宽30"	中心可选用 134F	1/4圆形	A78" B78"	4张	直径共 216"
蛾眉月形 044G	8张组合	B台面宽36"	中心可选用 034F	1/4圆形	A72" B72"	4张	直径共 216"



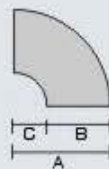
蛾眉月台组合特大圆台设计

蛾眉月组合台面宽B30英寸=76公分
第一环中心圆台020D+蛾眉月台035G+
蛾眉月台039G+第四环+第五环
合共五环共直径300英寸=直径760公分

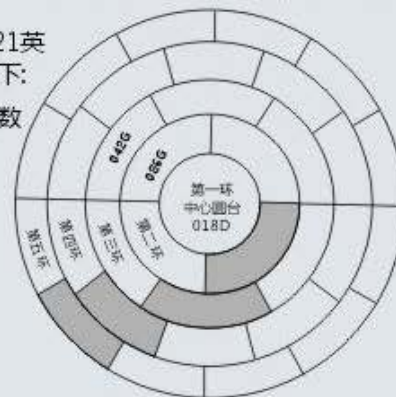
蛾眉月组合台面宽B36英寸=91.5公分
第一环中心圆台018D+蛾眉月台036G+
蛾眉月台042G+第四环+第五环
合共五环共直径336英寸=直径854公分



宴会圆台每一位客人假设需要21英寸空间,你的台尺寸计算方式如下:
直径(英寸) × 3.14(π) = 座位数
21英寸



蛾眉月形台

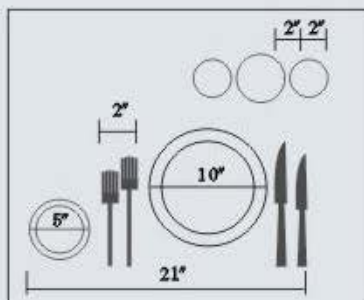
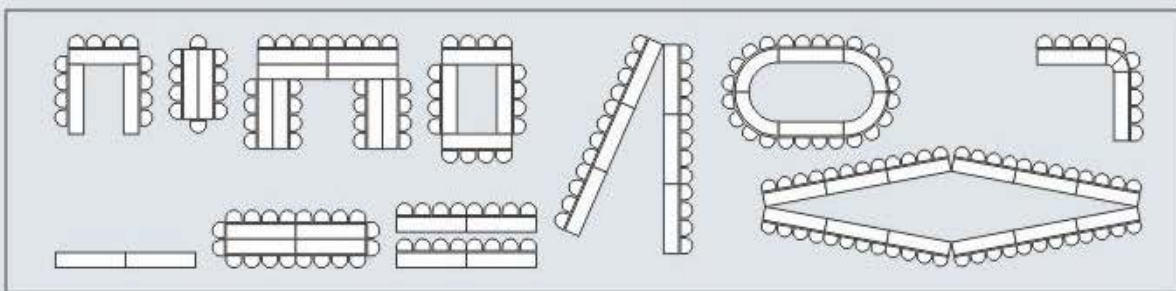
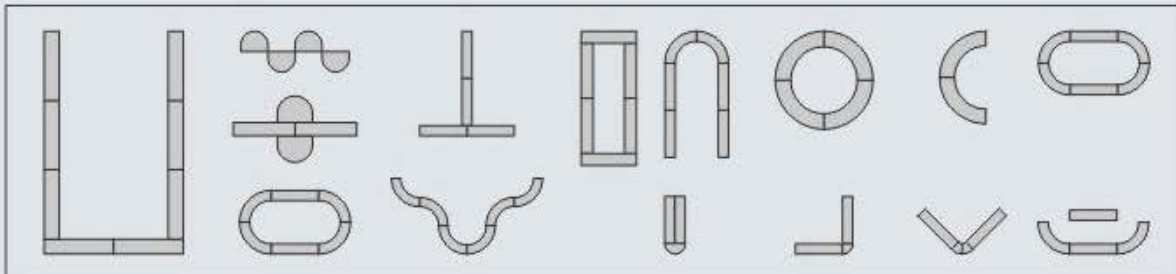


第一环中心圆台020D	1张	直径 60英寸=152公分; 座位数 9人	第一环中心圆台018D	1张	直径 48英寸=122公分; 座位数 6-7人
第二环蛾眉月形台035G	4张组合	直径 120英寸=304公分; 座位数 18人	第二环蛾眉月形台036G	4张组合	直径 120英寸=305公分; 座位数 18人
第三环蛾眉月形台039G	6张组合	直径 180英寸=458公分; 座位数 27人	第三环蛾眉月形台042G	6张组合	直径 192英寸=488公分; 座位数 28人
第四环蛾眉月形台	8张组合	直径 240英寸=609公分; 座位数 36人	第四环蛾眉月形台	10张组合	直径 264英寸=671公分; 座位数 39-40人
第五环蛾眉月形台	10张组合	直径 300英寸=762公分; 座位数 45人	第五环蛾眉月形台	12张组合	直径 336英寸=854公分; 座位数 50人

五环合共29张台

五环合共33张台

多功能组合摆设 Multi-table Layouts

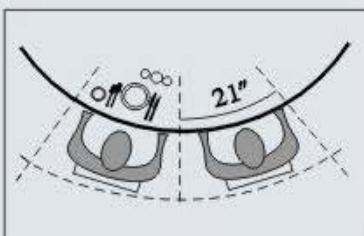


台规格及座位数(参考)

RECOMMENDED TABLE SIZE AND CAPACITY

宴会圆台每一位客人假设需要21英寸空间,你的台尺寸计算方式如下:
TO KNOW THE SIZE OF THE BANQUET ROUND TABLE YOU NEED, ASSUME 21" SPACE FOR EACH PERSON, PLEASE USE THE FOLLOWING FORMULA FOR CALCULATION:

$\frac{\text{直径(英寸)} \times 3.14(\pi)}{21 \text{英寸}} = \text{座位数}$	$\frac{\text{DLAMETER (IN.)} \times 3.14(\pi)}{21"} = \text{SEATING CAPACITY}$
--	--



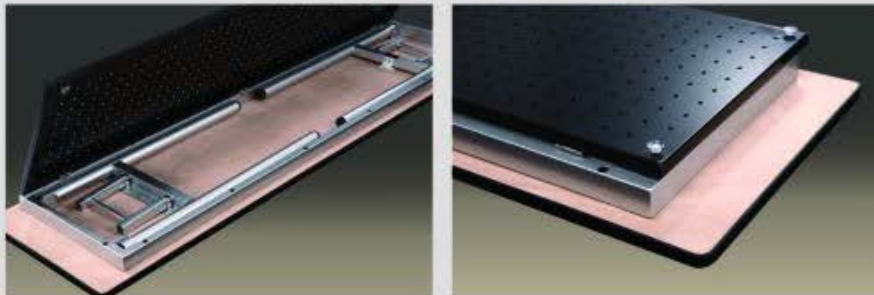
台尺寸 Table Size	座位数 Capacity	台尺寸 Table Size	座位数 Capacity
18" x 48"	2人 Persons	42" 直径dia.	4人 Persons
18" x 60"	2人 Persons	48" 直径dia.	6人 Persons
18" x 72"	3人 Persons	54" 直径dia.	6-8人 Persons
18" x 96"	4人 Persons	60" 直径dia.	8-10人 Persons
		66" 直径dia.	10人 Persons
		72" 直径dia.	10-12人 Persons
		126" 直径dia.	18-19人 Persons
30" x 48"	4-6人 Persons	144" 直径dia.	21-22人 Persons
30" x 60"	6人 Persons	180" 直径dia.	27-28人 Persons
30" x 72"	8人 Persons	192" 直径dia.	29-30人 Persons
30" x 96"	10人 Persons	216" 直径dia.	32-34人 Persons

Folding IBM Table With Plate



PT-F003
46X183X76CM (H)

黑色网眼挡板
Black Plate with small holes
8180#铁刀木色防火板面
8180# plastic laminate top



*台脚可以收入框架中,挡板可合拢后盖在台框上,并装有防撞胶垫,防止叠加时的碰撞损伤。

Legs of the table can be folded into a framework, a baffle plate can be covered on the bench after folding and is provided with anti-collision plastic plates for preventing collision damage.



BT-F003
46X183X76CM (H)

银色网眼挡板
Silver Plate with small holes
8024#银橡木色防火板面
8024# plastic laminate top

The Mobile Folding IBM Table



自动锁定防滑装置 (专利产品)
Automatic lock-in and Fixed Design



PT-M103
50(W) × 183 × (L)76(H)CM



Height Adjustable Folding Cocktail Table With Wheel



带锁定装置脚轮，可调高低铁架，
可翻转三聚氰胺台面

Castors with locking device, height
adjustable iron racks, reversible
melamine top table

KT-MF01
Dia.76 × 69-104(H)cm

KT-MF02
Dia.91.5 × 69-104(H)cm

固定式玻璃面鸡尾酒桌 cocktail table with special glass top

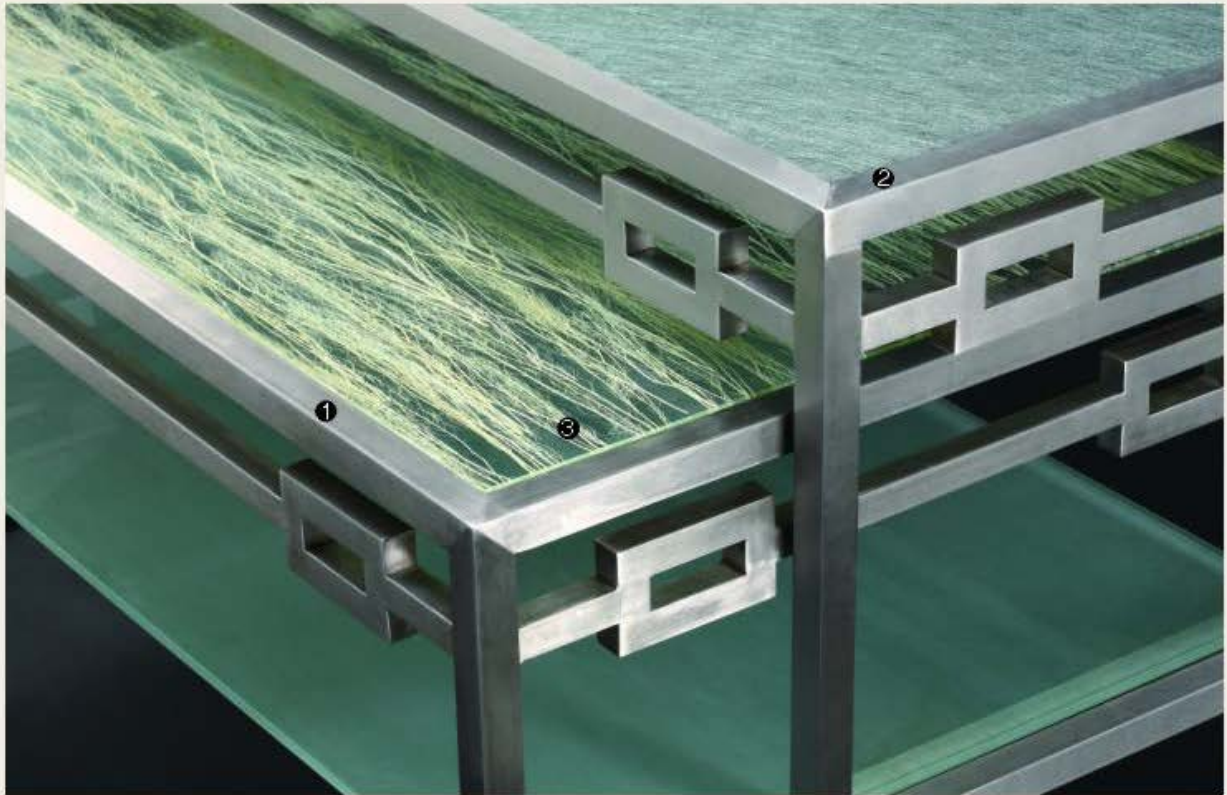
艺术浮雕玻璃面，铸铁固定式台架
Artistic glass surfaces with the thick-ness
of 15mm, cast iron fixed bench

KT-AC11
Dia.76 × 104(H)cm

KT-AC12
Dia.91.5 × 104(H)cm



Banquet Tables And Banquet Facilities



① 台架

采用30 × 30 × 1.2MM 304#不锈钢管拉丝处理（固定式）；或采用30 × 30 × 2MM喷漆方管（折叠式）。

Bench: adopting 30 × 30 × 1.2MM 304# stainless steel tubes for wiredrawing processing; or adopting 30 × 30 × 2MM square aluminum tubes for spraying paint (foldable type)

② 台面玻璃放置方式

有内嵌式或外飘式台面放置方式供选择，两种方式台面均可拆装。

Table glass placement methods:

There are built-in or external floating-type table placement mode for selection, and the table of the two methods can be removable.

③ 玻璃面选择 The Selection Of Glass



GW-001S GW-002S GW-003S GW-004S GW-005S GW-006S GW-007S GW-008S GW-009S GW-010S GW-011S



GW-012S GW-013S GW-014S GW-015S GW-016S GW-019S GW-401S GA-009S GA-301S GS-901A GS-902B



The Built-in Glass Top And Stainless Steel Frame Buffet Table



DS-101A 61×122×65(H)cm
DS-102A 61×130×80(H)cm
DS-103A 61×138×95(H)cm
DS-111A 76×152×65(H)cm
DS-112A 76×160×80(H)cm
DS-113A 76×168×95(H)cm



DS-141T 76×76×65(H)cm
DS-142T 84×84×80(H)cm
DS-143T 91.5×91.5×95(H)cm



DS-121B 76×76×65(H)cm
DS-122B 84×84×80(H)cm
DS-133B 91.5×91.5×95(H)cm

Buffet Table: Built in- Glass Top and Folding Aluminium Stand



RECTANGLE TABLE-长方台

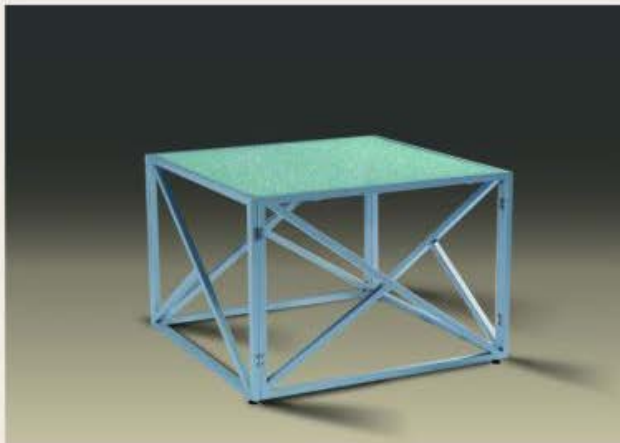
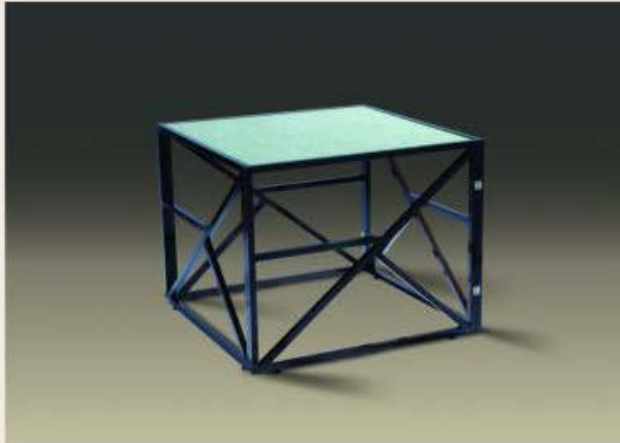
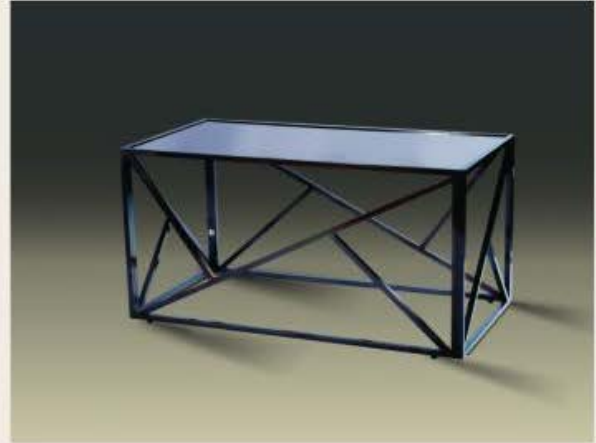
MODEL
型号

DA-101A
DA-102A
DA-103A
DA-111A
DA-112A
DA-113A

SIZE

整体规格

61×122×76(H)cm
61×122×86(H)cm
61×122×96(H)cm
76×152×76(H)cm
76×152×86(H)cm
76×152×96(H)cm



SQUARE TABLE-方台

MODEL
型号

DA-121B
DA-122B
DA-123B
DA-131B
DA-132B
DA-133B

SIZE

整体规格

76×76×76(H)cm
76×76×86(H)cm
76×76×96(H)cm
91.5×91.5×76(H)cm
91.5×91.5×86(H)cm
91.5×91.5×96(H)cm



Buffet Table:Overlap Glass Top and Folding Aluminium Stand



Buffet Table:Overlap Glass Top and Folding Aluminium Stand



方台-SQUARE TABLE

MODEL
型号

DA-221B
DA-222B
DA-223B
DA-231B
DA-232B
DA-233B

SIZE
整体规格

76 × 76 × 76 (H)cm
76 × 76 × 86 (H)cm
76 × 76 × 96 (H)cm
91.5 × 91.5 × 76 (H)cm
91.5 × 91.5 × 86 (H)cm
91.5 × 91.5 × 96 (H)cm



圆台-ROUND TABLE

MODEL
型号

DA-261D
DA-262D
DA-263D
DA-271D
DA-272D
DA-273D

SIZE
整体规格

直径76 × 76 (H)cm
直径76 × 86 (H)cm
直径76 × 96 (H)cm
直径91.5 × 76 (H)cm
直径91.5 × 86 (H)cm
直径91.5 × 96 (H)cm

长方台-RECTANGLE TABLE

MODEL
型号

DA-201A
DA-202A
DA-203A
DA-211A
DA-212A
DA-213A

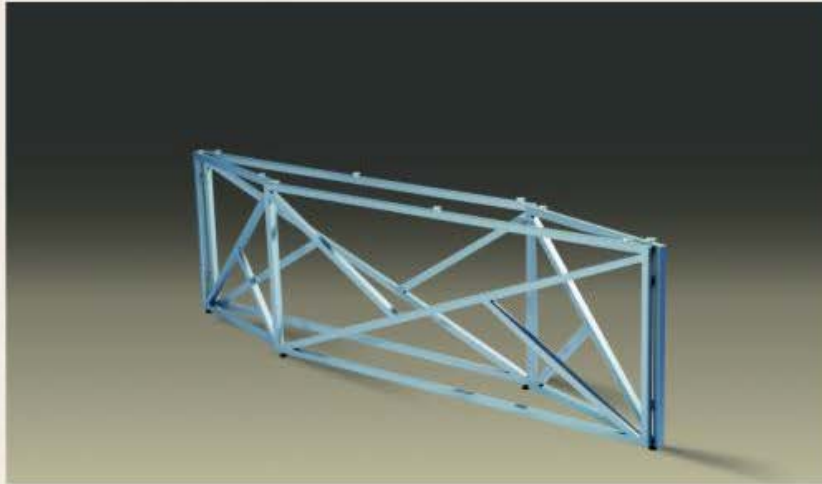
SIZE
整体规格

61 × 122 × 76 (H)cm
61 × 122 × 86 (H)cm
61 × 122 × 96 (H)cm
76 × 152 × 76 (H)cm
76 × 152 × 86 (H)cm
76 × 152 × 96 (H)cm





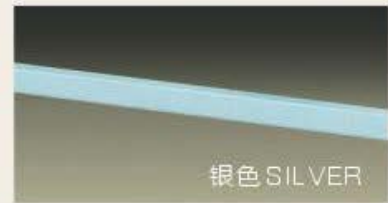
可折叠式铝合金台架 Folding Aluminium Table Stand



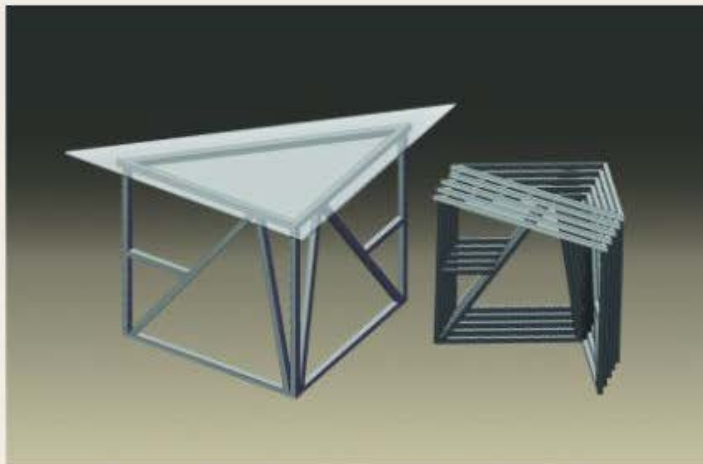
色泽选择-THE COLOR



亮褐色 BROWN



银色 SILVER



三角形台 TRIANGLE TABLE

MODEL 型号

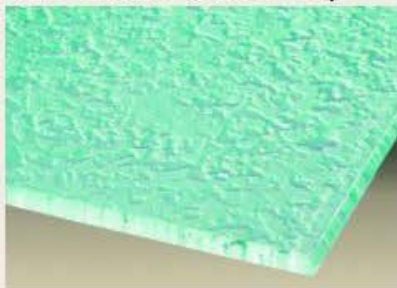
DA-241T
DA-242T
DA-243T
DA-251T
DA-252T
DA-253T

SIZE 整体规格

76 × 76 × 76 (H)cm
76 × 76 × 86 (H)cm
76 × 76 × 96 (H)cm
91.5 × 91.5 × 76 (H)cm
91.5 × 91.5 × 86 (H)cm
91.5 × 91.5 × 96 (H)cm

玻璃款式选择

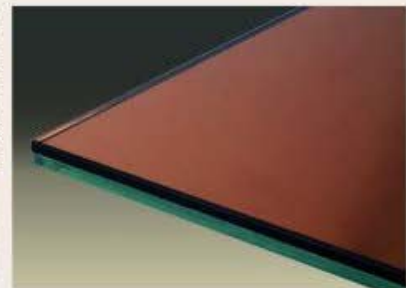
The Glass Table Top



GA009S 艺术浮雕玻璃
厚度:12MM(H)



其他夹丝玻璃
款式见P 060页



GA301S 镜面茶色玻璃
厚度:10MM(H)

Stainless Steel Display Table



DP-601B
三层展示架
3 Layers Display Table
45(L)X45(D)X140(H)cm

不锈钢支架, 有机玻璃镶嵌侧面,
透明玻璃面盖

Stainless steel frame, synthetic
glass is inlaid in the lateral faces,
provided with a transparent glass
cover.

此系列展示台均设有脚轮, 移动方便,
可加装内置光源。

不锈钢展示台
Stainless Steel Display Table

DP-401A	61×122×76(H)cm
DP-402A	61×122×91(H)cm
DP-403A	61×122×106(H)cm
DP-501B	61×61×76(H)cm
DP-502B	61×61×91(H)cm
DP-503B	61×61×106(H)cm





Steel Stand and Broken Glass TOP



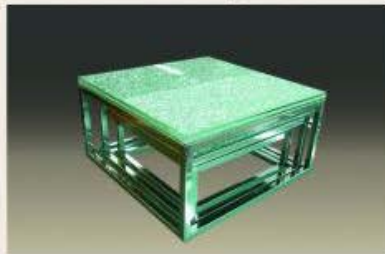
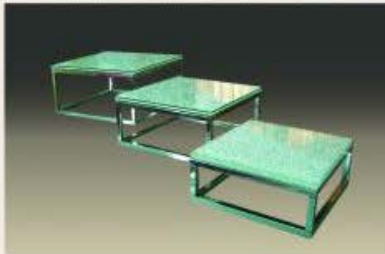
DM-301B
50 × 50 × 76(H)cm



DM-302B
50 × 50 × 96(H)cm

DM-303B
50 × 50 × 116(H)cm

不锈钢展示架系列 Stainless Steel Display Stand



EQ-TF21 30 × 30 × 15(H)cm
EQ-TF22 35 × 35 × 20(H)cm
EQ-TF23 40 × 40 × 25(H)cm



EQ-TF11 30(Dia) × 11(H)cm
EQ-TF12 30(Dia) × 16(H)cm
直径9MM 不锈钢
可叠放收藏, 客户自配餐碟或玻璃



EQ-TF01
80(L) × 35(D) × 71(H)cm



EQ-TF02
100(L) × 71(D) × 71(H)cm



EQ-TF03
50(L) × 37(D) × 37(H)cm



Mobile Stage



预设舞台裙子母贴
Velcro Tab is built-in



方便快捷的调节高度开关
The convenient high-adjustment latch



地毯卷包在边框内，无铁压边，地毯面拼接自然美观。
Carpet is rolled and wrapped in regulars without pressing edges and seams are natural and beautiful.



型号 MODEL NO.	规格 SIZE	调节高度 HEIGHT
EQ-MS11	122(W)×244cm(L) 48"(W)×96"(L)	41-61cm 16"-24"
EQ-MS12	122(W)×244cm(L) 48"(W)×96"(L)	61-81cm 24"-32"
EQ-MS21	183(W)×244cm(L) 72"(W)×96"(L)	41-61cm 16"-24"
EQ-MS22	183(W)×244cm(L) 72"(W)×96"(L)	61-81cm 24"-32"
EQ-MS13	122(W)×244cm(L) 48"(W)×96"(L)	41-61-81cm 16"-24"-32"
EQ-MS23	183(W)×244cm(L) 72"(W)×96"(L)	41-61-81cm 16"-24"-32"

地毯面色泽选择 The Colors of Carpet



灰色 Grey



暗红 Burgundy



烟灰 Light Grey



Mobile Stage



异形定制拼接舞台，可按客户要求定制形状及规格。

Alien customized splicing stage, and shapes and sizes can be customized according to demands of clients.



EQ-ST02 二级梯 90 (W)× 59(D)× 51.2(H)cm



附带脚轮 易于收放
The steps is added wheel, that is very convenient for moving



EQ-ST03 三级梯 98 (W)× 92(D)× 131(H)cm



Banquet Furniture And Service Trolley

送餐车 Service Trolley



EX-RS01
105 × 90 × 76(H)cm



EX-WB13 不锈钢保温箱架车
90 × 45 × 166(H)cm



EX-WB02 不锈钢电保温箱
38 × 39 × 48(H)cm



EX-RS02
108 × 91 × 76(H)cm

