



# Premium Line

NEW 2017

Spaceflight and irresistible appeal combine in the new Avantgarde Premium Line chafing dishes. A new benchmark in efficiency, practicality and versatility.

Eye catching and adaptable in today's modern buffet landscape, the Premium Line chafing dishes meet the most demanding expectations in terms of food presentation, portion control, food quality and waste reduction.

And of course, our manufacturing experience delivers on budget and quality.

Elevate your buffet with ease. Choose Avantgarde Premium Line with new extra wide glass lid.



## FEATURES

- Next generation
- 18/10 construction
- Extra wide glass lid
- Hydraulic hinge
- Induction base
- Water channel
- Silent soft close lid
- Food pan included
- Adjustable levelling



## Features

- Modern design and functionality
- Use on an induction hob or on the matching stand as a classic chafing dish
- Compatible with induction, electric element or chafer fuel
- Patented hydraulic hinge mechanism for smooth and silent closing motion
- Removable lid for cleaning and storage

Lid Position  
Holds position at 90° and 70°  
Closes automatically and silently  
with gentle touch

Mirror Finish

Water Return System  
Condensation flows back  
to water pan

Notch  
Change food pan easily

Hydraulic Hinge  
Smooth opening  
and closing

Adjustable Levelling Pin  
Perfectly level placement  
as required

Capsuled Bottom  
Sandwich induction base  
for fast and even heating



## Chafing Dishes

Code	Description	Size (mm)
AG 4011LU	1/1 Chafing Dish Glass Lid Stainless Steel Insert Incl. 9 L Capacity	585 x 465 x 180



Code	Description	Size (mm)
AG 4011F	Buffet Stand - 1/1 Server (Electric heating optional)	600 x 395 x 172



Code	Description	Size (mm)
AG 4032LU	2/3 Chafing Dish Glass Lid Stainless Steel Insert Incl. 6 L Capacity	470 x 405 x 180



Code	Description	Size (mm)
AG 4032F	Buffet Stand - 2/3 Server (Electric heating optional)	425 x 400 x 172



Code	Description	Size (mm)
AG 4021LU	1/2 Chafing Dish Glass Lid Stainless Steel Insert Incl. 4 L Capacity	465 x 315 x 180



Code	Description	Size (mm)
AG 4021F	Buffet Stand - 1/2 Server (Electric heating optional)	400 x 340 x 172



## Chafing Dishes

Code	Description	Size (mm)
AG 4060LU	Round Chafing Dish Glass Lid Stainless Steel Insert Incl. 6 L Capacity	527 x 447 x 180



Code	Description	Size (mm)
AG 4060F	Buffet Stand - Round 6 L Server (Electric heating optional)	445 x 445 x 172



Code	Description	Size (mm)
AG 4040LU	Round Chafing Dish Glass Lid Stainless Steel Insert Incl. 4 L Capacity	460 x 375 x 180



Code	Description	Size (mm)
AG 4040F	Buffet Stand - Round 4 L Server (Electric heating optional)	375 x 375 x 172



Code	Description	Size (mm)
AG 40-11LU	Buffet Soup Server Glass Lid Stainless Steel Insert Incl. 11 L Capacity	460 x 432 x 280



Code	Description	Size (mm)
AG 40-11F	Buffet Stand - Soup Server (Electric heating optional)	375 x 375 x 172



## Accessories

Code	Description	Size (mm)
AG 32011	1/1 Porcelain Food Pan	530 x 330 x 60



Code	Description	Size (mm)
AG 32011-D	1/1 Porcelain Food Pan Divided	530 x 330 x 60



Code	Description	Size (mm)
AG 32023	2/3 Porcelain Food Pan	355 x 330 x 55



Code	Description	Size (mm)
AG 32023-D	2/3 Porcelain Food Pan Divided	355 x 330 x 55



Code	Description	Size (mm)
AG 32012	1/2 Porcelain Food Pan	330 x 270 x 60



Code	Description	Size (mm)
AG 32013	1/3 Porcelain Food Pan	330 x 180 x 60



## Accessories

Code	Description	Size (mm)
AG 32060	Round Porcelain Food Pan For 6 L Chafing Dish	385 x 385 x 65



Code	Description	Size (mm)
AG 32060-D	Round Porcelain Food Pan Divided For 6 L Chafing Dish	385 x 385 x 65



Code	Description	Size (mm)
AG 32040	Round Porcelain Food Pan For 4 L Chafing Dish	330 x 330 x 65



Code	Description	Size (mm)
AG 32040-D	Round Porcelain Food Pan Divided For 4 L Chafing Dish	330 x 330 x 65



Code	Description	Size (mm)
AG 33011	1/1 Stainless Steel Food Pan 9 L Capacity	530 x 325 x 65



Code	Description	Size (mm)
AG 33011-D	1/1 Stainless Steel Food Pan Divided 2 x 4 L Capacity	530 x 325 x 65



## Accessories

Code	Description	Size (mm)
AG 33023	2/3 Stainless Steel Food Pan 6 L Capacity	353 x 325 x 65



Code	Description	Size (mm)
AG 33012	1/2 Stainless Steel Food Pan 4 L Capacity	325 x 265 x 65



Code	Description	Size (mm)
AG 33013	1/3 Stainless Steel Food Pan 3 L Capacity	325 x 176 x 65



Code	Description	Size (mm)
AG 33060	Round Stainless Steel Food Pan For 6 L Chafing Dish	385 x 385 x 65



Code	Description	Size (mm)
AG 33060-D	Round Stainless Steel Food Pan Divided For 6 L Chafing Dish	385 x 385 x 65



Code	Description	Size (mm)
AG 33040	Round Stainless Steel Food Pan For 4 L Chafing Dish	290 x 290 x 65



## Accessories

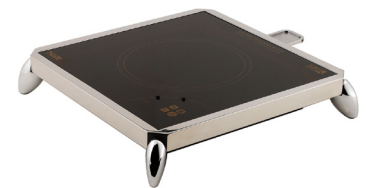
Code	Description	Size (mm)
AG 33033	Round Stainless Steel Food Pan For 11 L Buffet Soup Server	290 x 290 x 215



Code	Description	Size (mm)
AG 30510	Counter Fitted Induction Heater Cable Remote Control 1000 W Unit	385 x 360 x 100
AG 30520	2000 W Unit	
AG 30525	2500 W Unit	



Code	Description	Size (mm)
AG 30535	Benchtop Induction Heater Touch Panel Control 1000 W	355 x 355 x 62



Code	Description
05524.0-01	Stego Electric Heating Element Suitable for all Stands Rotary Dial Control 500 W

